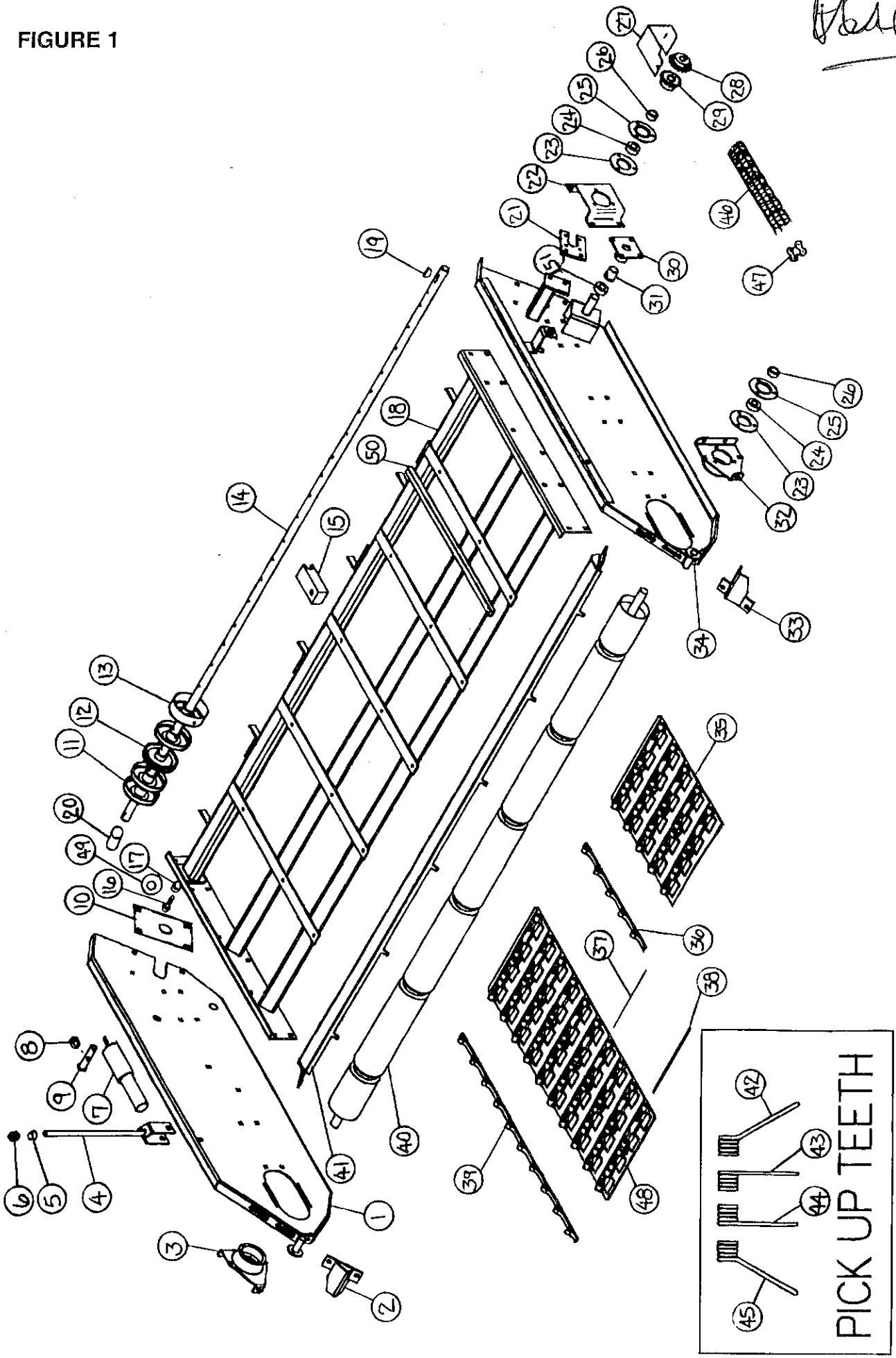




FIGURE 1

*Paul*



42  
43  
44  
PICK UP TEETH

**FIGURE 1  
WINDROW MERGER  
PICK UP**

ITEM	PART NO.	DESCRIPTION	ITEM	PART NO.	DESCRIPTION
1.	WM178	RH Side Panel	33.	WM33	LH Rubber Bumper Stop Mount
2.	WM2	Rubber Bumper Stop Mount	34.	WM193	LH Side Panel
3.	WM179	RH Roller Adjustment Bracket	35.	WM194A	Pickup Belt 1/2 Section (Ser. #000151 & Above)
4.	WM5	Lifting Rod	35.	WM194	Pickup Belt 1/2 Section (Ser. #990150 & Prior)
5.	WM6	Lift Linkage Spacer	36.	WM195	1/2 Belt, V
6.	T23	3/4-16 Nylock Nut Fine Thread	37.	WM35	Rod, Finger 3/8" ODx17-3/8"
7.	WM7	Shocks	38.	WM38A	Splice Wire (Ser. #000151 & Above .141 Dia. x 18")
8.	WM9	3/8-24 Nut	38.	WM38	Splice Wire (Ser. #990150 & Prior .09 Dia. x 18")
9.	WM10	Shock Pin	39.	WM31	Belt, V
10.	WM180	Side Panel Slot Plate	40.	WM34	Front Roller
11.	WM11	Pulley, Flat 1" Wide	41.	WM122	Bottom Roller Scraper
12.	WM12	Pulley, V	42.	WM39	Tooth #1
13.	WM13	Pulley, Flat 2" Wide	43.	WM40	Tooth #2
14.	WM181	Back Roller Drive Shaft	44.	WM41	Tooth #3
15.	WM15	Wood Bearing (Requires 4)	45.	WM42	Tooth #4
16.	WM182	Bolt	46.	D42	Double Roller Chain
17.	WM183	Spacer	47.	D118	Double Connector Link
18.	WM184	Z-Channel	48.	WM196	Pickup Belt Section (Ser. #000151 & Above)
19.	G12	5/16x1" Woodruff Key	48.	WM36	Pickup Belt Section (Ser. #990150 & Prior)
20.	WM185	PVC Spacer	<del>48.</del>	WM197	Complete Pickup Belt (2-WM196 plus 1-WM194A)
21.	WM78	Hydraulic Motor Mount	49.	WM218	Pivot Washer
22.	WM186	Bearing Bracket LH	50.	WM219	Poly Slides
* 23.	WM187	Bearing Bracket RH	51.	WM221	Pivot Spacer
23.	F145	Flange			
24.	WM29	Bearing			
25.	F143	Flange (Greaseable)			
26.	WM27	Lock Collar, 1-1/4" ID (W/Set Screw)			
27.	WM188	Shield			
28.	WM189	16T Motor Coupler Sprocket (1" Bore)			
29.	WM190	16T Coupler Sprocket (1-1/4" Bore)			
30.	WM191	Pivot Bushing Bracket			
31.	T79	Bushing			
32.	WM192	LH Roller Adjustment Bracket			

**NOTE:** \* (Means Not Shown)

*Steel  
plus teeth*

FIGURE 2

Older Style

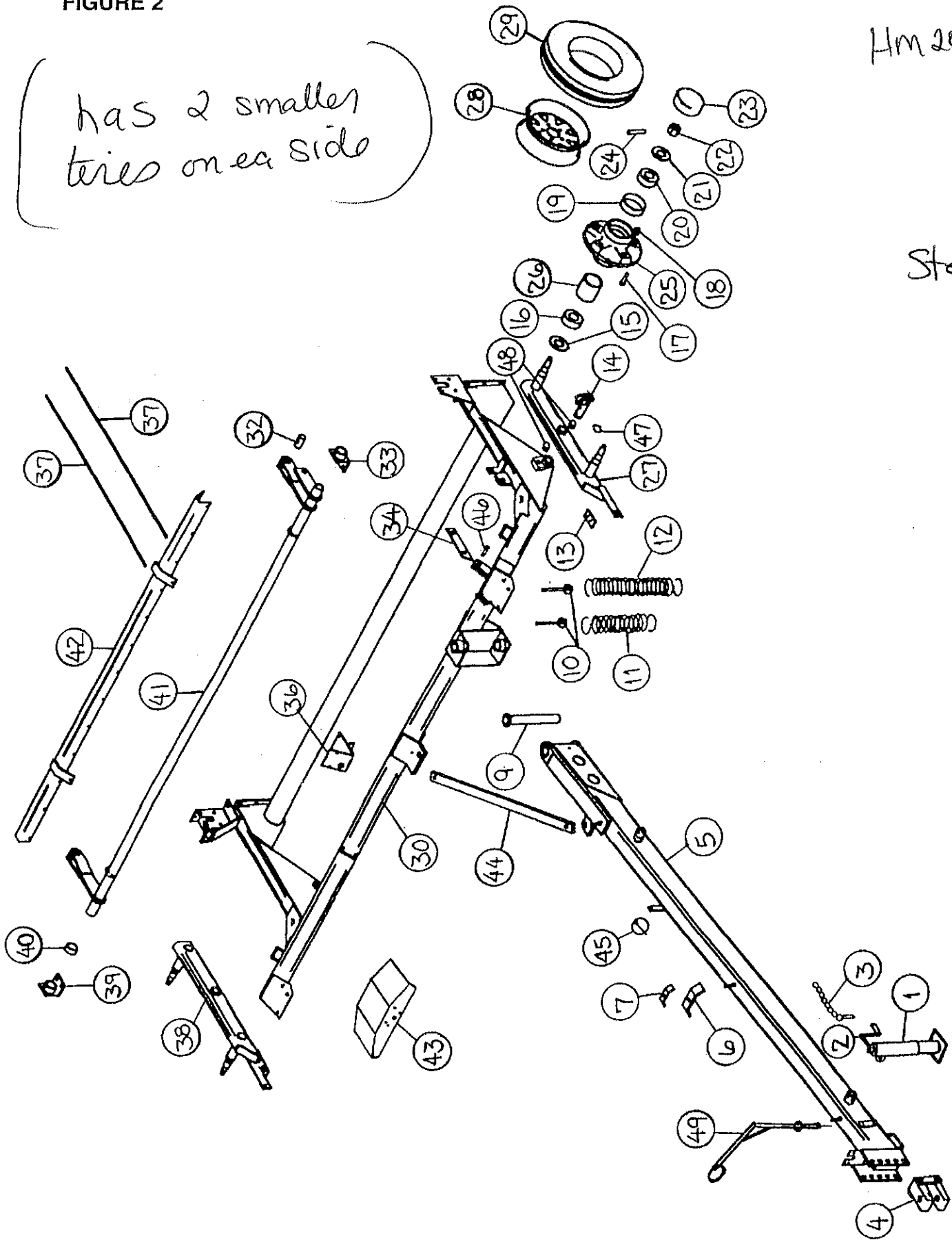
Hm 2000

9' Head

Steel teeth

?

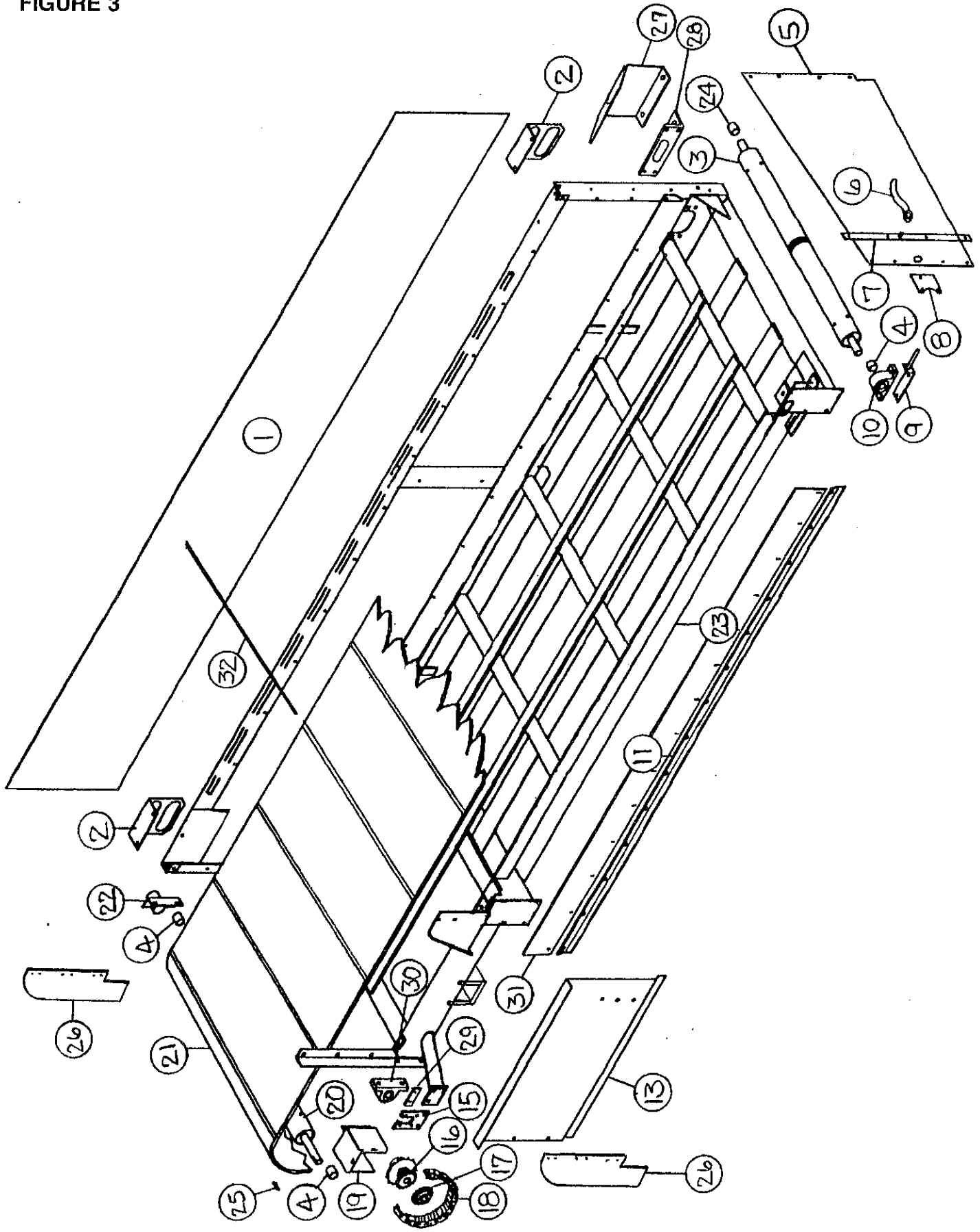
has 2 smaller  
tees on ea side



**FIGURE 2  
CHASSIS ASSEMBLY**

<b>ITEM</b>	<b>PART NO.</b>	<b>DESCRIPTIONS</b>
1.	BFR223	Jack
2.	B17B	Jack Handle
3.	BFR4	Jack Pin and Chain
4.	WM43	Hitch, Adjustable
5.	WM44	Pole
6.	HE42	Large Hose Holder
7.	23N67	Small Hose Holder
8.	WM123	Hydraulic Bracket
9.	WM46	Pole Pin
10.	WM47	Spring Holder
* 11.	WM48	Spring, Pickup
* 12.	WM49	Spring, Tandem <i>Black</i>
13.	WM50	Bumper
14.	WM198	Axle Pivot Pin
15.	CAT5	Seal
16.	CAT6	Inner Bearing
17.	CAT128A	Hub Stud
18.	CAT14	Hub Nut
19.	CAT9	Outer Race
20.	CAT10	Outer Bearing
21.	BFR63	Washer
22.	T35	Spindle Nut
23.	CAT13	Hub Cap
24.	T37	Cotter Pin
25.	CAT8	Hub W/Cups
26.	CAT7	Inner Race
27.	WM52	LH Tandem
28.	CAT195	Wheel 13 x 4.5
29.	CAT198	Tire ST175 x 80D13
30.	WM53	Main Frame
32.	WM55	Lift Arm Pivot
33.	WM56	LH Lifter Bearing Bracket
34.	WM57	Safety Bar
36.	WM59	Valve Mount
37.	WM60	Wind Guard Rods
38.	WM61	RH Tandem
39.	WM62	RH Lifter Bearing Bracket
40.	WM63	Lift Linkage Spacer
41.	WM64	Lifting Linkage
42.	WM65	Wind Guard
43.	WM19	Valve Shield
44.	WM129	Transport Lock
45.	F56	Linch Pin
46.	WM25	Clevis Pin 5/8" x 2"
47.	12V82	Snap Ring
48.	X75	Axle Bushing
49.	16SV332	Hose Holder

FIGURE 3

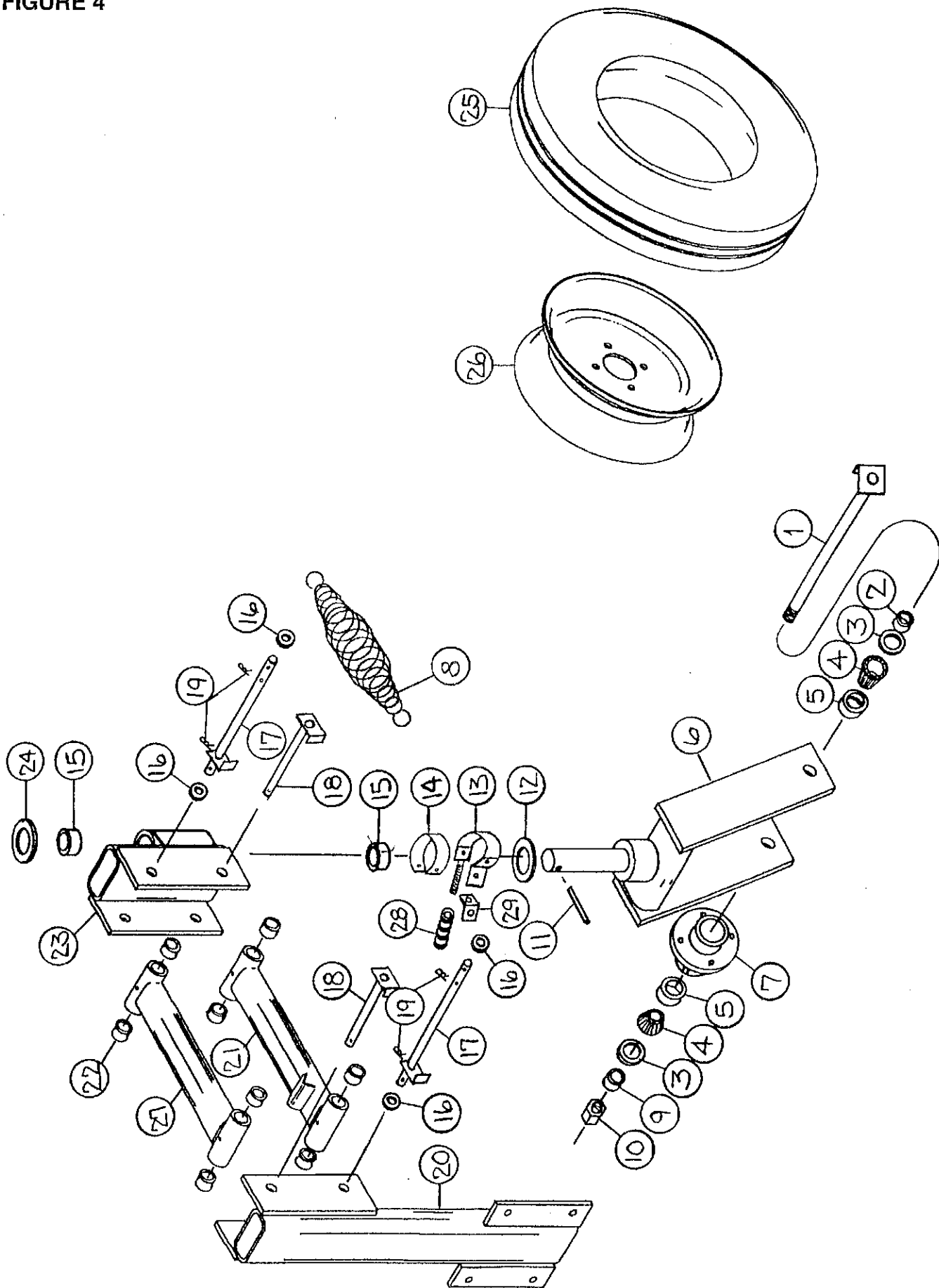


**FIGURE 3  
CONVEYOR ASSEMBLY**

<b>ITEM</b>	<b>PART NO.</b>	<b>DESCRIPTION</b>
1.	WM199	Back Poly
2.	WM67	Light Bracket
3.	WM68	Left Conveyor Roller
4.	WM69	Short Roller Spacer
5.	WM200	Conveyor Left End Poly
6.	S192	Handle Nut
7.	WM71	Left Poly Bar Strip
8.	WM72	Front Poly Holder
9.	WM73	Conveyor Bearing Tightener
10.	17G7	1-1/4" Bearing
11.	WM74	Front Conveyor Skirt
13.	WM76	Conveyor Front Bottom Rail
15.	WM78	Hydraulic Motor Mount
16.	WM98	Sprocket 17T - 11T
17.	D84	Sprocket 11T
18.	D83	#60 Chain 11 Pitch
*	D39	Connector Link #60
19.	WM82	Conveyor Shield
20.	WM83	Drive Conveyor Roller
21.	WM84	Conveyor Belt
22.	WM85	Stub Shaft Shield
23.	WM86	Conveyor Frame
24.	WM87	Long Roller Spacer
25.	WM121	Key 5/16" Square x 1"
26.	WM101	Discharge Shield
27.	WM126	Conveyor Bearing Shield
28.	WM128	LH Rear Tightener Bracket
29.	WM134	Hydraulic Motor Mount Spacer
30.	WM166	1-1/4" Bearing
31.	WM203	Rubber
32.	WM220	Cross Conveyor Lacing Pin

**NOTE:** \* (Means Not Shown)

FIGURE 4



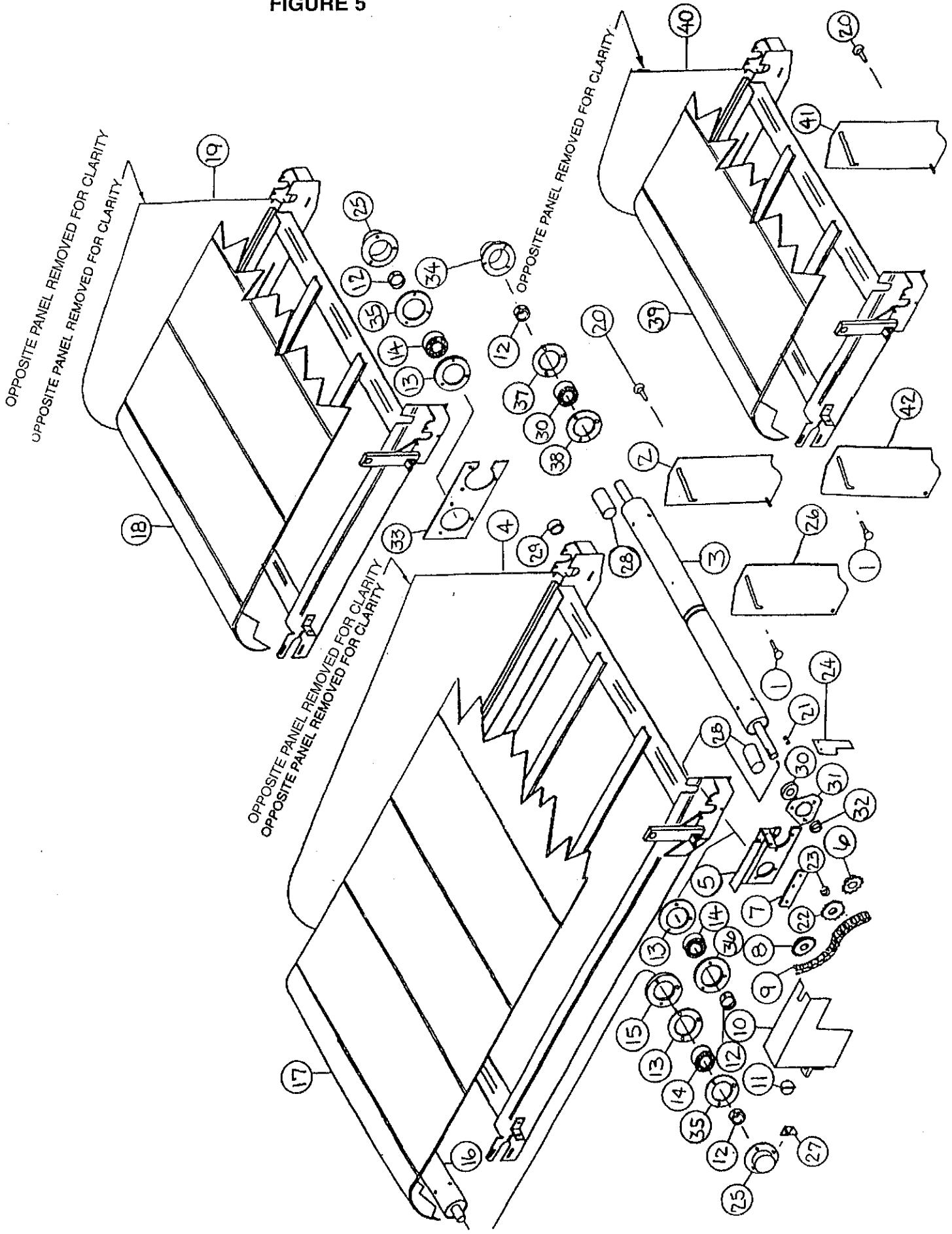


**FIGURE 4  
CARRY WHEEL ASSEMBLY**

<b>ITEM</b>	<b>PART NO.</b>	<b>DESCRIPTION</b>
1.	BFR279	Axle Shaft
2.	BFR278A	Spacer
3.	BFR273	Seal
4.	BFR274	Bearing
5.	BFR275	Race
6.	BFR270	Complete Fork
7.	BFR276	Hub
8.	WM209	Spring
9.	BFR272A	Spacer
10.	BFR271	1" Nylon Lock Nut
11.	F26	Roll Pin
12.	BFR269	Bronze Washer
13.	WM207	Brake
14.	WM208	Brake Pad
15.	23N17	Bronze Bushing
16.	WM112	Washer
17.	WM206	Spring Mount Shaft
18.	WM205	Clevis Pin
19.	T72	Cotter Pin
20.	WM90	Upright Mount Tubing
21.	WM91	Link Tubing
22.	23N17	Bronze Bushing
23.	WM92	Wheel Pivot Mount
24.	BFR179	Washer
25.	BFR277	Tire
26.	BFR280	Wheel
*	BFR276	Hub Complete
27.	WM17	Link Tubing Top
28.	WM210	Brake Spring
29.	WM211	Brake Angle

**NOTE:** \* (Means Not Shown)

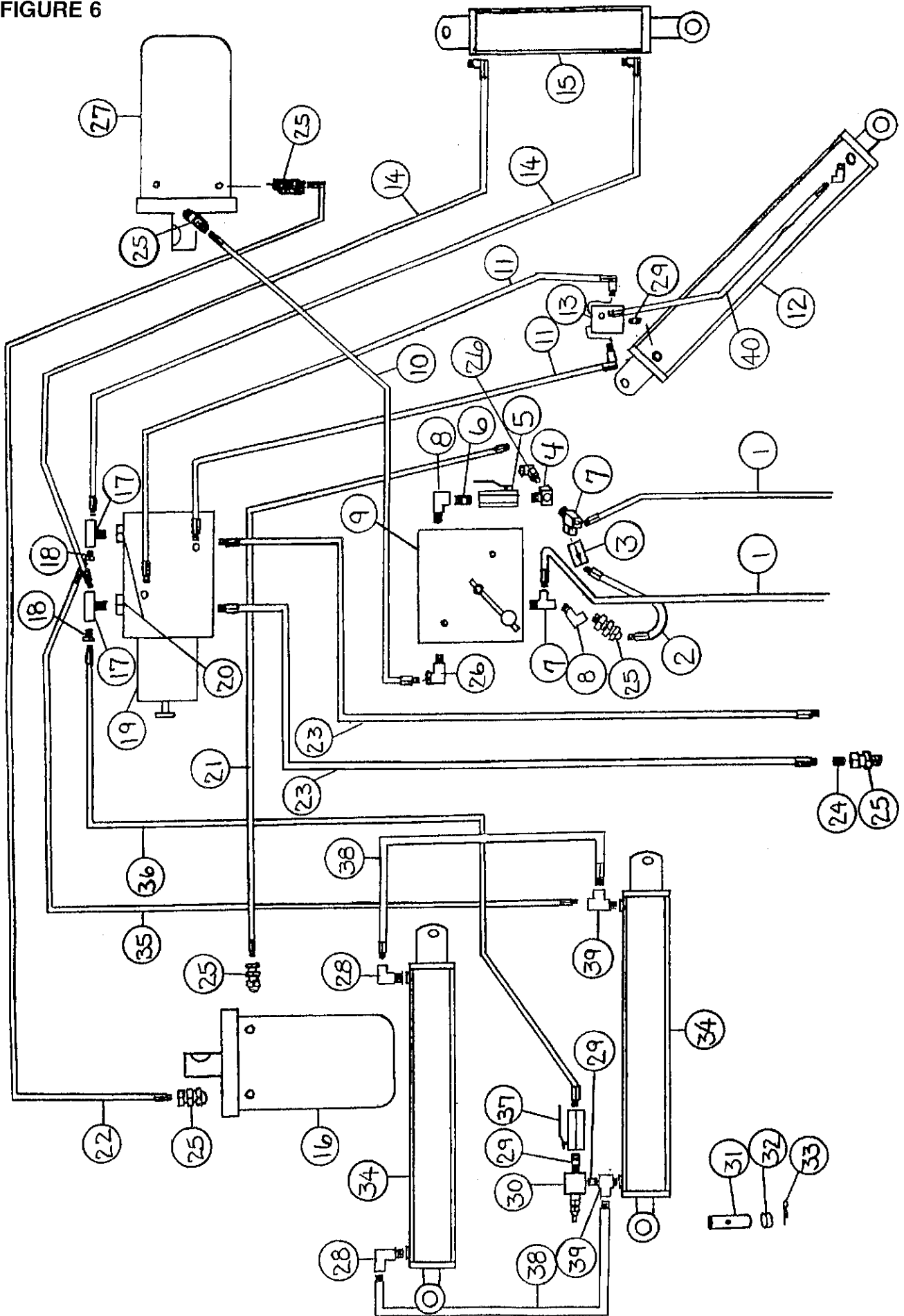
FIGURE 5



**FIGURE 5**  
**OPTIONAL EXTENSION 2'-4' AND 6'**

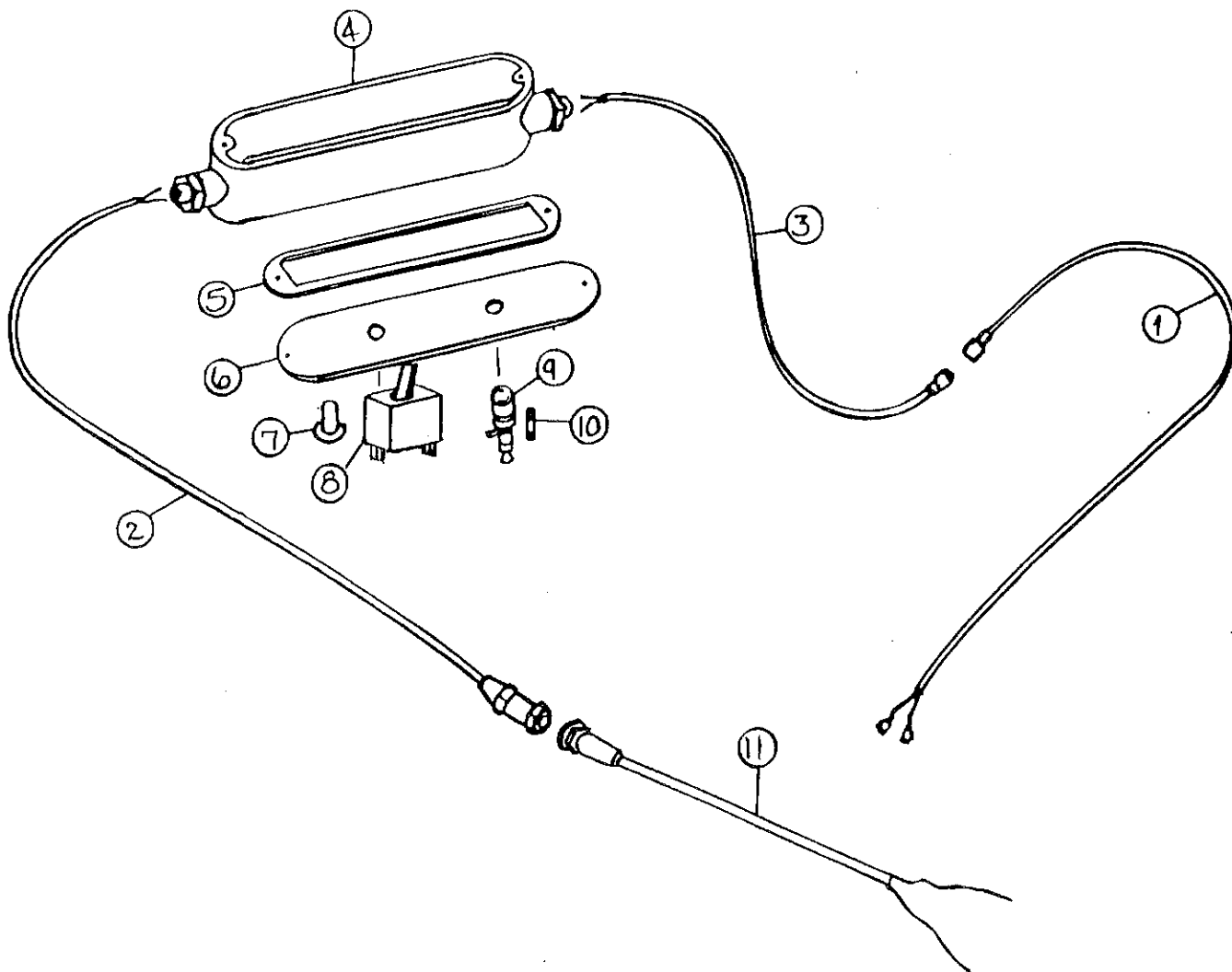
<b>ITEM</b>	<b>PART NO.</b>	<b>DESCRIPTION</b>
1.	WM93	Slot Pin Pivot Front
2.	WM94	Extension Filler Back
3.	WM83	Drive Conveyor Roller
4.	WM96	Extension Two Frame (6 Ft.)
5.	WM97	Extension Front Connection
6.	WM98	Sprocket 17T-11T (Drive Roller Spocket on Base Unit)
7.	WM99	Tightener Bar
8.	WM100	Sprocket 17T (#50)
9.	WM113	#50 Chain 35 Pitch
10.	WM102	Extension Shield
11.	F56	Linch Pin
12.	F16	Lock Collar
13.	F14	Flange 1-1/4"
14.	F115	Bearing
15.	23N174	Flange Spacer
16.	WM103	Extension Conveyor Roller
17.	WM104	Extension Belt (6' Extension)
18.	WM105	Extension Belt (4' Extension)
19.	WM106	Extension One Frame (4 Ft.)
20.	WM107	Slot Pin Pivot Back
21.	WM121	Key 5/16" Square x 1"
22.	WM117	Idler Sprocket 12T
23.	WM125	Sprocket Bearing
24.	WM132	Extension Bolt on Shield
25.	F95	Beater Bearing Shield
26.	WM133	Extension Filler Front
27.	WM135	Tightener Angle
28.	WM136	Extension PVC Shield
29.	WM137	Extension Long Spacer
30.	WM29	Bearing 1-1/4"
31.	WM28	Triangle Flanges - 3 Hole
32.	WM27	Lock Collar 1-1/4" ID (W/Set Screw)
33.	WM213	Large Extension Bearing Mount
34.	WM212	Bearing Shield
35.	F114	Flange
36.	F114A	Flange
37.	F143	Flange - 45 Degree Zerk
38.	F145	Flange - Heavy Duty
39.	WM214	Extension Belt (2 Ft. Extension)
40.	WM215	Extension Three Frame (2 Ft.)
41.	WM216	Extension Filler Back (2 Ft.)
42.	WM217	Extension Filler Front (2 Ft.)

FIGURE 6



**FIGURE 6  
HYDRAULICS**

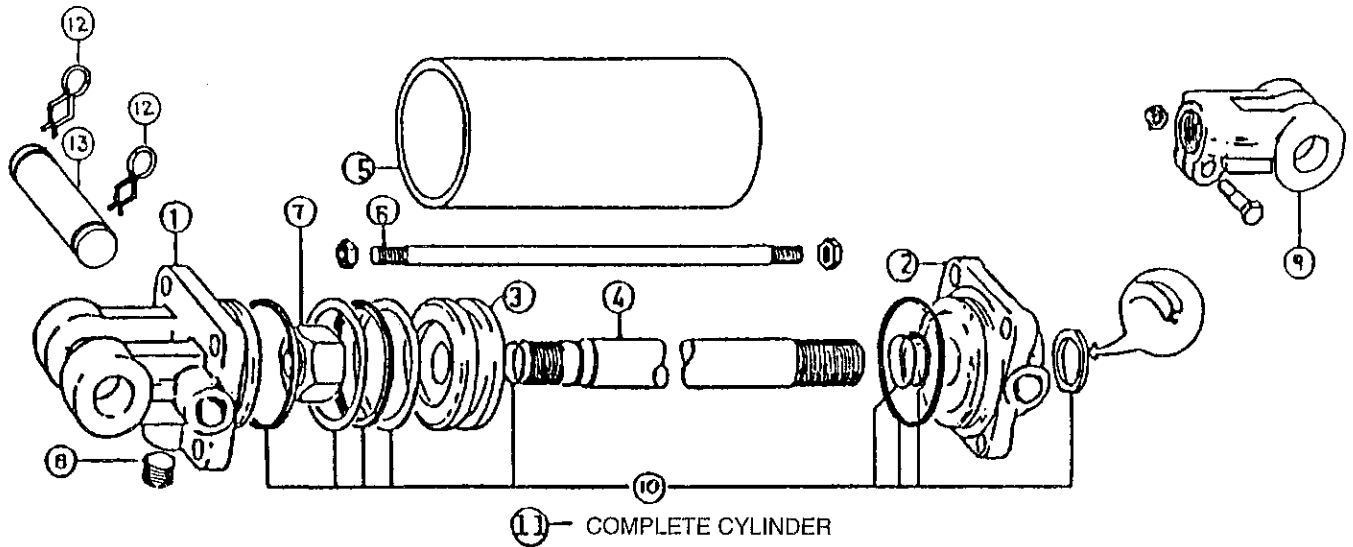
<b>ITEM</b>	<b>PART NO.</b>	<b>DESCRIPTION</b>
1.	WM171	Hose 1/2" x 193"
2.	WM170	Hose 1/2" x 10-1/2"
3.	DF18	Check Valve
4.	WM139	Service Tee 1/2"
5.	WM140	1/2" Ball Valve
6.	WM141	1/2" Nipple
7.	16SV352	1/2" Street Tee
8.	HE58	1/2" Street Elbow
9.	DF15	Flow Control
10.	WM172	Hose 1/2" x 106"
11.	WM143	Hose 1/4" x 24"
12.	12V116	Cylinder
13.	WM176	Pole Lock Valve
14.	WM145	Hose 1/4" x 62"
15.	BFR69	Cylinder
16.	DF1	Hydraulic Motor
17.	WM146	3/8" Street Tee
18.	WM147	3/8" Pipe Plug
19.	16SV247	Electric Valve
20.	WM148	Adapter 3/4-16 O-Ring
21.	WM174	Hose 1/2" x 203"
22.	WM173	Hose 1/2" x 294"
23.	WM151	Hose 1/4" x 200"
24.	WM81	Orifice .062
25.	LW174	Adapter Union
26.	WM175	90 Degree Union Adapter
27.	WM177	Hydraulic Motor
29.	BFR188	Nipple 3/8"
40.	BFR315	Hose 1/4"x20"
<b>OPTIONAL EXTENSION HYDRAULICS:</b>		
28.	23N234	Street Elbow
29.	BFR188	Nipple 3/8"
30.	16SV339	Sequence Valve
31.	BFR517	Cylinder Pin
32.	X28	Spacer
33.	23N108	Cotter Pin 3/16" x 2"
34.	12V116	Cylinder
35.	WM152	Hose 1/4" x 153"
36.	WM153	Hose 1/4" x 169"
37.	16SV338	1/4" Ball Valve
38.	WM204	Hose 1/4"x80"
39.	23N116	Tee



**FIGURE 7  
ELECTRIC CONTROL BOX**

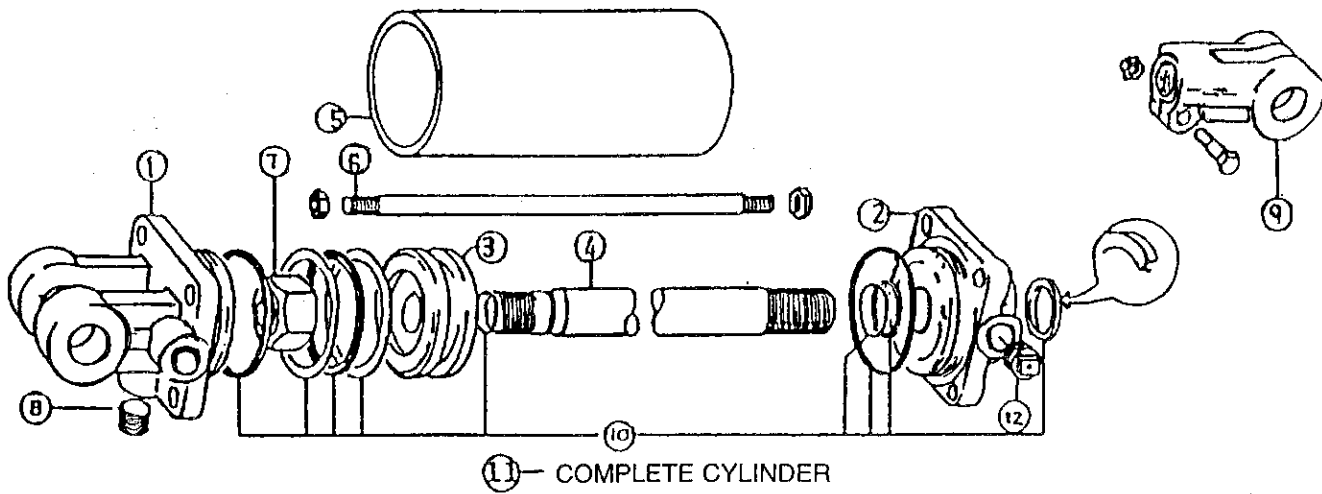
ITEM	PART NO.	DESCRIPTION
1.	WM108	Merger Power Supply Cord W/Ends
2.	16SV271	Control Box Power Supply W/Plug in Slots
3.	16SV270	Tractor Power Supply W/Pins
4.	16SV316	Control Box
5.	16SV317	Control Box Gasket
6.	16SV318	Control Box Cover
7.	16SV235	Switch Boot
8.	WM109	Pole / Pickup Switch
9.	16SV231	Fuse Folder
10.	16SV232	Fuse
11.	16SV269	Tractor Control Cord
*	WM110	Control Box Complete

**NOTE:** \* (Means Not Shown)



**FIGURE 8**  
**HYDRAULIC CYLINDER 16"**

ITEM	PART NO.	DESCRIPTION
1.	23N142	Clevis Cap
2.	23N143	Rod Cap
3.	23N144	Piston
4.	23N145	Rod
5.	23N146	Cylinder Tube
6.	23N147	Tie Rod
7.	23N148	Piston Nut
8.	23N149	Plug
9.	23N150	Rod Clevis
10.	23N151	Seal Kit
11.	12V116	Complete Cylinder
12.	T144	Clip Pin
13.	T143	Hydraulic Cylinder Pin



**FIGURE 9**  
**HYDRAULIC CYLINDER 8"**

ITEM	PART NO.	DESCRIPTION
1.	23N142	Clevis Cap
2.	23N143	Rod Cap
3.	23N144	Piston
4.	T134	Rod
5.	BFR68	Cylinder Tube
6.	T186	Tie Rod
7.	23N148	Piston Nut
8.	23N149	Plug
9.	23N150	Rod Clevis
10.	23N151	Seal Kit
11.	BFR69	Complete Cylinder
12.	BFR70	Clip Pin